

# Liebherr Crawler Crane Track Shoe



## 1. Liebherr Track Shoes Specification:

Attribute	Crawler Crane Undercarriage Parts
Color	Black
Material	35SiMn, 28CrMnMo, 31Mn2SiMo
Feature	Heat treated, Smooth surface, Accurate dimensions
Warranty	2500 Working Hours
Hot Sale	LR1280 Track Shoe, LR1650 Track Shoe, LR1750 Track Shoe

## 2. Liebherr Track Pads are suitable for those model:

Liebherr	HS852HD, HS853HD, HS855HD; LR1100, LR1200, LR1280, LR1300, LR1400, LR1600, LR1650,LR1750.
----------	--

## 3. Liebherr Track Pad Joined By One Piece Full Floating Pin, Method of Installation As Follows:

- 1). As photos, put two track shoes together



2). Put two pins into the holes of track shoe like photos:



3). Fix two side of track pin with bolt & nut like photos:



4). The same as first three steps, you could assemble other track shoe together with pin, bolt & nut.



#### 4. Package & Delivery:

As usual, 20pcs to 22pcs Liebherr Track Shoes are packed in One Pallet.

Pins and Bolt&nuts for Track Shoe are packed in One Plywood Crate.

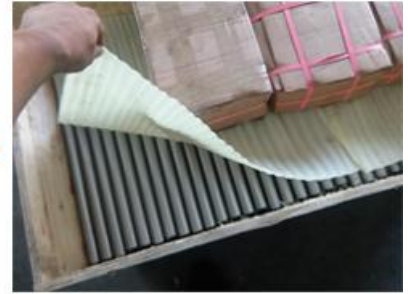
## PACKAGE & DELIVERY



20pcs or 22pcs Track Shoes Each Pallet



Each Pallet Covered With Thin Film and Sticker



Pin and Bolt&Nuts are Packed in Plywood Crate



Parts in the Container



Parts are delivered to Port



Plywood Crate

---

---

## FAQ

---

---

**Q** Does the track shoe and pin have heat treatment?

- *Yes, all the track shoes and pins undergo heat treatment, hardening and tempering, in addition, the pins will be precision work.*

**Q** What is the warranty period of the track shoe?

- *Track shoe warranty period is 2500 working hours.*

*After delivery, we will issue quality certificate. If the track shoe are damaged under normal use in warranty period, new one will be send to you as soon as possible.*

**Q** How long is the delivery time?

- *We have parts storehouse covered the area of 3000m<sup>2</sup>.*

*Most parts are available in stock. If no stock, we will delivery the parts in 10-15days after getting your final purchasing order.*

**Q** Do you provide samples?

- *Yes, we can offer part samples, but the cost shall be borne by you.*

**Q** Can you produce parts according to sample or drawing?

- *Yes, our engineers have rich experience in undercarriage parts, the parts can meet your demands.*

# QUALITY CERTIFICATE



**SHANDONG VALUE  
MACHINERY MANUFACTURE CO.,LTD**

TO:



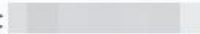
Phone :

Date : 28th August.,2015

Pro-In NO: VM150806

INVOICE NO: VM150806

CONTRACT NO.:



## QUALITY CERTIFICATE

Goods Description	Machine Model
Track Shoe With Pin and Bolt&Nut	
Track Shoe With Pin and Bolt&Nut	

WE CERTIFY THAT THE PRODUCT LISTED ABOVE CONFORMS WITH THE QUALITY REQUIREMENTS SPECIFIED IN MANUFACTURING SPECIFICATIONS;  
WARRANTY: 2000 WORKING HOURS AFTER RECEIVING PARTS FROM INCHON.  
IF DEFECTIVE PRODUCTS IS FOUND OR THE PRODUCTS BROKEN DURING WARRANTY TIME, THE SELLER WILL SEND NEW ONE TO THE BUYER.

山东价值机械配件有限公司  
SHANDONG VALUE MACHINERY MANUFACTURE CO.,LTD

*Wabocheng*

Shandong Value Machinery Manufacture Co.,LTD

Add: NO.1 Tianzheng Road,Laishan District,Yantai City,Shandong Province,China

Tel: +86 535 6710636

Fax: +86 535 6710836

E-mail: [Info@valuetrackpart.com](mailto:Info@valuetrackpart.com)

Website: [www.valuetrackparts.com](http://www.valuetrackparts.com)